



TEXTILE TOURISM PROJECT

Revival of Heritage Design
Dakti Craft, Shillong



SUMMARY

Dakti under the **Integrated Capacity Building Initiative** serves as the Implementing Agency for the Textile Project with a focus on design development and skill enhancement activities.

As part of this initiative, a wide range of design-related services will be provided to the weavers in the cluster, which shall include **Introduction to new product designs, Development of Samples and Product Prototypes**, developing samples and product prototypes, and offering other design-related support to enhance their craft.

In addition to these activities, the project also aims to **revive and preserve traditional woven motifs** and designs that have been lost over time. Reconnecting with heritage designs, the initiative aims uplift cultural legacy of the community and incorporating them into modern textile products. Furthermore, the project will develop exclusive designs for the **'Premium-Luxury'** market segment, ensuring that both traditional and contemporary design elements are blended together to create unique, high-quality and artisanal products.



REVIVAL OF HERITAGE DESIGN PURPOSE

The Revival of Heritage Design project is an initiative focused on rediscovering and preserving the rich traditional weaving techniques and motifs that have been lost over time. By researching traditional-based practices and designs, the project aims to document these cultural treasures and integrate them into contemporary designs. This honors the craftsmanship of the past and also creates unique products that resonate with both heritage and modern aesthetics.

The project include activities like:

1. **Research and documentation:** to conduct interviews with weavers of different clusters and gather information to understand the significance of each design and motif.
2. **Product development:** creating a range of modern design incorporating it with traditional motifs into products like: home decor, upholstery, accessories, to capture a wider audience.
3. **Exhibitions and Showcases:** Hosting exhibitions to display the newly created pieces alongside historical documentation, highlighting the journey of revival.



REVIVAL OF HERITAGE DESIGN APPROACH

The initiative to revive the heritage design is through collaborative research conducted across the clusters. The products for the revival of heritage design will be sampled and weaved by the weavers within the clusters ensuring authenticity and high quality craftsmanship.

1. **Understanding Heritage:** Conduct in-depth research to identify traditional designs, materials, and weaving techniques that hold cultural significance in each cluster.
2. **Community Engagement:** Involve local artisans in discussions to gather insights and stories about their craft, which can inform the design process.
3. **Sampling Process:** Develop initial samples based on collaborative research, integrating traditional motifs and modern functionality.
4. **Local Materials:** Prioritize the use of locally sourced materials to enhance sustainability and maintain the cultural identity of the products.

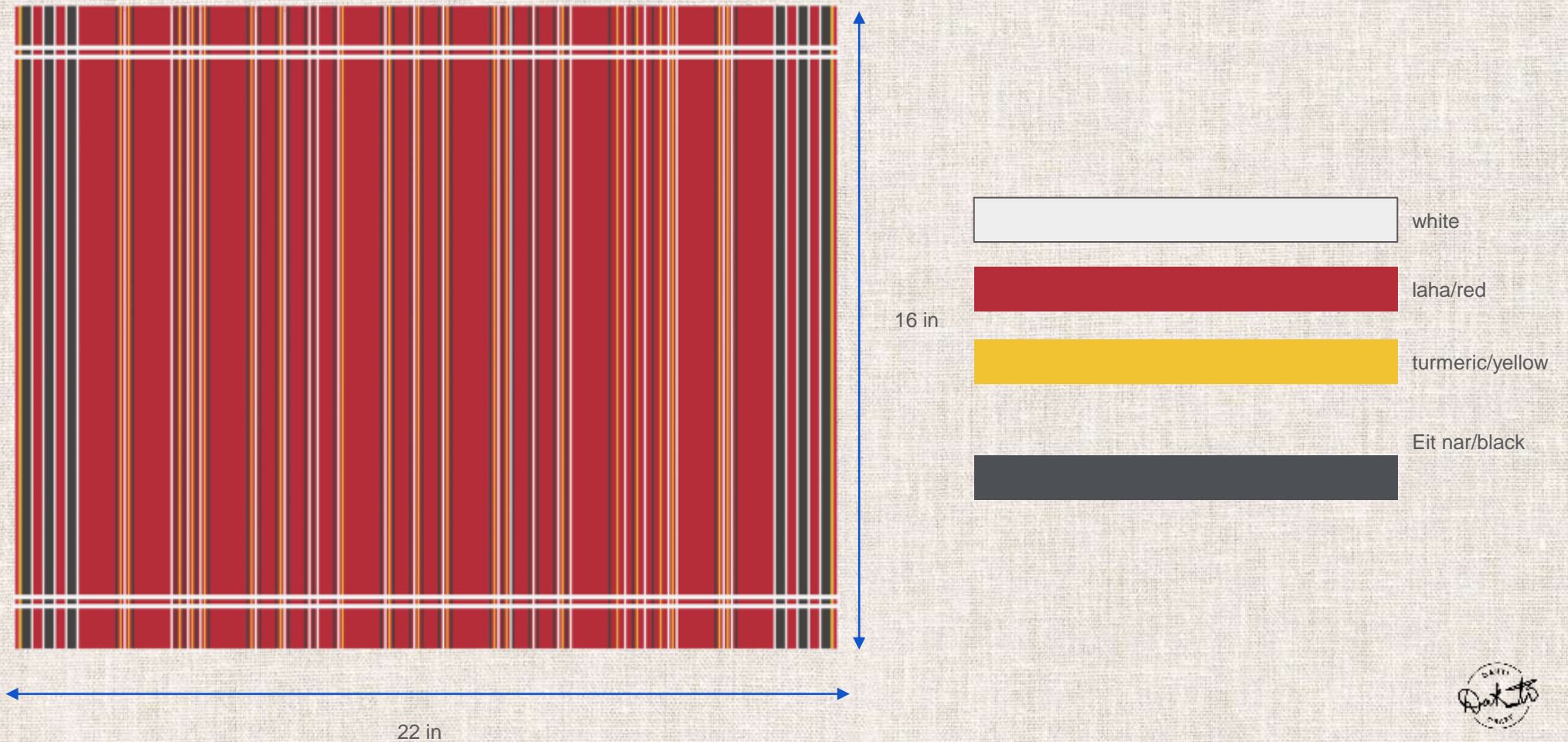
This approach not only revives heritage design but also creates a sustainable model that empowers artisans and preserves their invaluable skills for future generations



Revival of Heritage Design - Revival Design 1

District	Ri-Bhoi	Village	Umdohkha
Sub Tribe	Raid Nongtluh	Motif name/product	Thoh lain/jainpein

Description: The stripe pattern are from the traditional attire of the women of Raid Nongtluh in Mawlong village. The stripes signifies *ki basan* or the ancestral elders of their sub tribe. The stripes have been incorporated into products that can be used as a wall decor or a table mat.

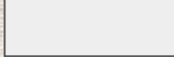





Revival of Heritage Design - Revival Design 1

District	Ri-Bhoi	Village	Umdohkha
Sub Tribe	Raid Nongtluh	Motif name/product	Thoh lain/jainpein

Description: The stripe pattern are from the traditional attire of the women of Raid Nongtluh in Mawlong village. The stripes signifies *ki basan* or the ancestral elders of their sub tribe. The stripes have been incorporated into products that can be used as a wall decor or a table mat.



-  white
-  laha/red
-  turmeric/yellow
-  Eit nar/black



Revival of Heritage Design - Revival Design 2

District	Ri-Bhoi	Village	Mawlong
Sub Tribe	Raid Nongtluh	Motif name/product	Jain pan

Description: The design is taken from the motif of the *Jain pan* or waistband of the Raid Nongtluh from Mawlong Village. This particular sample is several decades old, and modern weavers face challenges in replicating its intricate design



Revival of Heritage Design - Revival Design 2

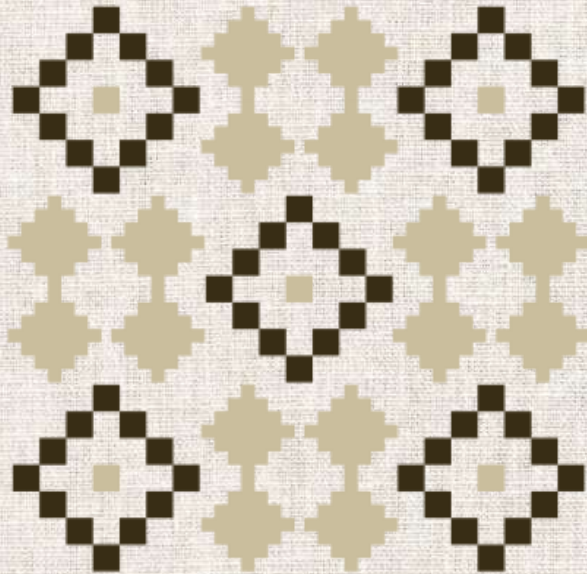
District	Ri-Bhoi	Village	Mawlong
Sub Tribe	Raid Nongtluh	Motif name/product	Jain pan
Description: Each motif has been woven in a series of small individual samples			



Revival of Heritage Design - Revival Design 3

District	Ri-Bhoi	Village	Umdohkha
Sub Tribe	Raid Nongtluh	Motif name/product	Jain pan

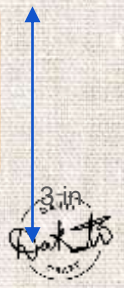
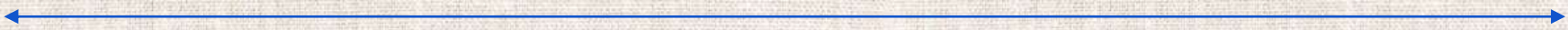
Description: The design is taken from the motif of the *Jain pan* or waistband of the Raid Nongtluh from Mawlong Village. The motif is incorporated into a band that can be applied in various products or as a product in itself.



white

turmeric/yellow

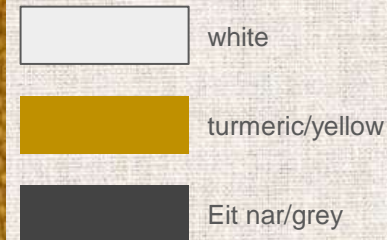
Eit nar/grey



Revival of Heritage Design - Revival Design 3

District	Ri-Bhoi	Village	Umdohkha
Sub Tribe	Raid Nongtluh	Motif name/product	Jain pan

Description: The design is taken from the motif of the *Jain pan* or waistband of the Raid Nongtluh from Mawlong Village. The motif is incorporated into a band that can be applied in various products or as a product in itself.



L - 40 in
W - 3 in



Revival of Heritage Design - Revival Design 4

District	Ri-Bhoi	Village	Umdohkha
Sub Tribe	Raid Nongtluh	Motif name/product	Jain pan

Description: The design is taken from the motif of the *Jain pan* or waistband of the Raid Nongtluh from Mawlong Village. The motif is incorporated into a band that can be applied in various products or as a product in itself.



white

turmeric/yellow

Eit nar/grey

L - 40 in
W - 3 in







Revival of Heritage Design - Revival Design 4

District	Ri-Bhoi	Village	Umdohkha
Sub Tribe	Raid Nongtluh	Motif name/product	Jain pan

Description: The motif on the belt sample is inspired by the motifs of a very old *Jain pan* weaved by the weaver from Raid Nongtluh in Mawlong village.



-  white
-  turmeric/yellow
-  Waitlam pyrthat/green
-  Eit nar/grey

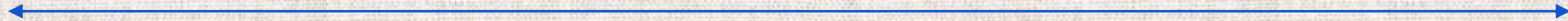
L - 40 in
W - 3 in



Revival of Heritage Design - Revival Design 5

District	Ri-Bhoi	Village	Umdohkha
Sub Tribe	Raid Nongtluh	Motif name/product	Jain pan

Description: The design is taken from the motif of the traditional textile of the Raid Nongtluh. The motif is incorporated into a band that can be applied in various products or as a product in itself.



40 in

Revival of Heritage Design

Digital Reference

Revival of Heritage Design - Revival Design 5

District	Ri-Bhoi	Village	Umdohkha
Sub Tribe	Raid Nongtluh	Motif name/product	Jain pan

Description: The design is taken from the motif of the traditional textile of the Raid Nongtluh. The motif is incorporated into a band that can be applied in various products or as a product in itself.



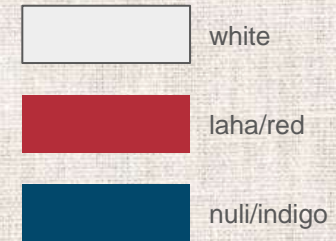
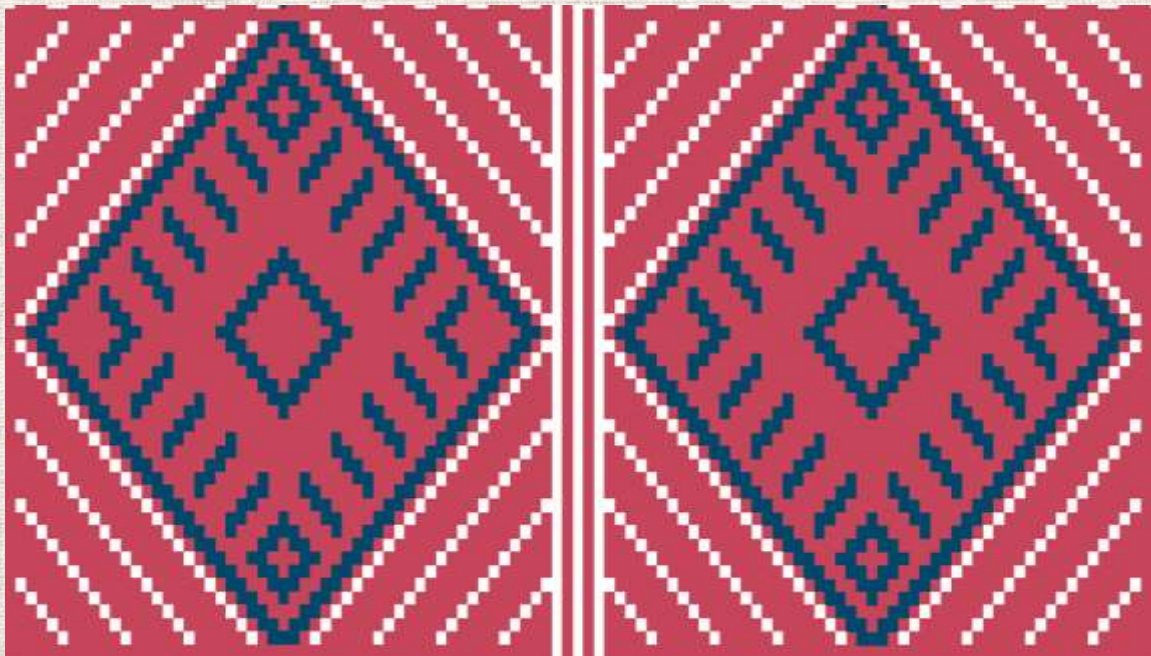
L - 40 in
W - 3 in



Revival of Heritage Design - Revival Design 6

District	Ri-Bhoi	Village	Umdohkha
Sub Tribe	Raid Nongtluh	Motif name/product	Jain pan

Description: The design is taken from the motif of the *Jain pan* or waistband of the Raid Nongtluh from Mawlong Village. The motif is incorporated into a band that can be applied in various products or as a product in itself.



40 in

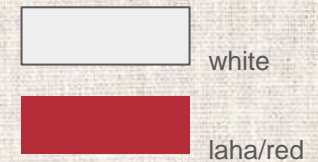
3 in



Revival of Heritage Design - Revival Design 6

District	Ri-Bhoi	Village	Umdohkha
Sub Tribe	Raid Nongtluh	Motif name/product	Jain pan

Description: The design is taken from the motif of the *Jain pan* or waistband of the Raid Nongtluh from Mawlong Village. The motif is incorporated into a band that can be applied in various products or as a product in itself.



L - 118 in (3 m)
W - 2.5 in



Revival of Heritage Design - Revival Design 7

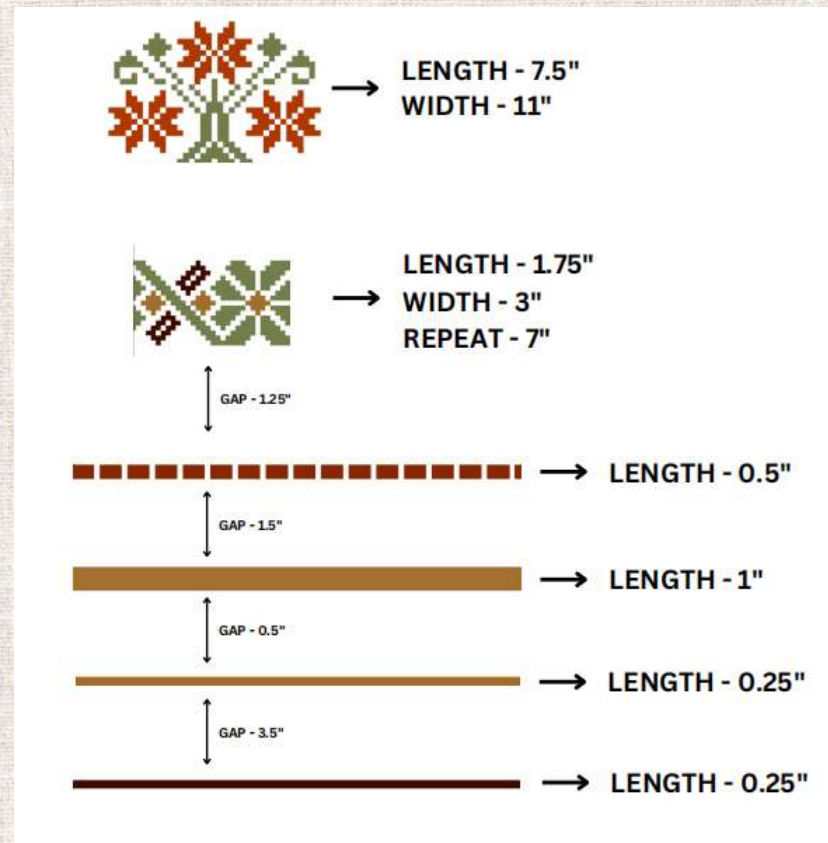
District	Ri-Bhoi	Village	Umdohkha
Sub Tribe	Raid Nongtluh	Motif name/product	Jambili athon/waist coat

Description: The motifs on the table runner are inspired by the textiles of the Karbi people from Rongjari Village.. The design has been incorporated into a table runner.



80 in

20 in



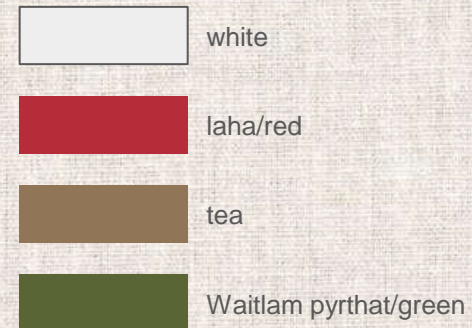
- white
- Iaha/red
- tea
- Waitlam pyrthat/green



Revival of Heritage Design - Revival Design 7

District	Ri-Bhoi	Village	Umdohkha
Sub Tribe	Raid Nongtluh	Motif name/product	Jain pan

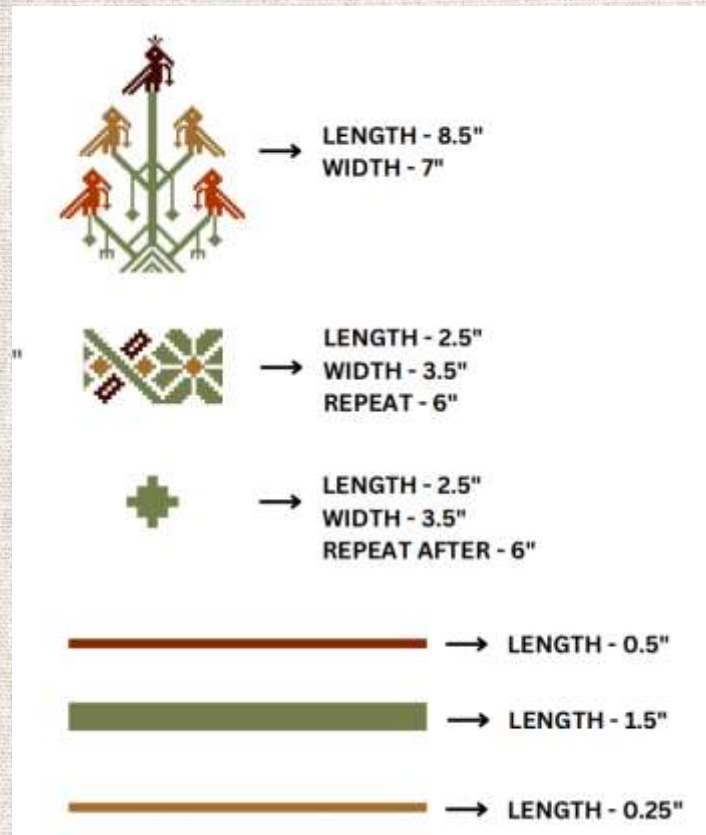
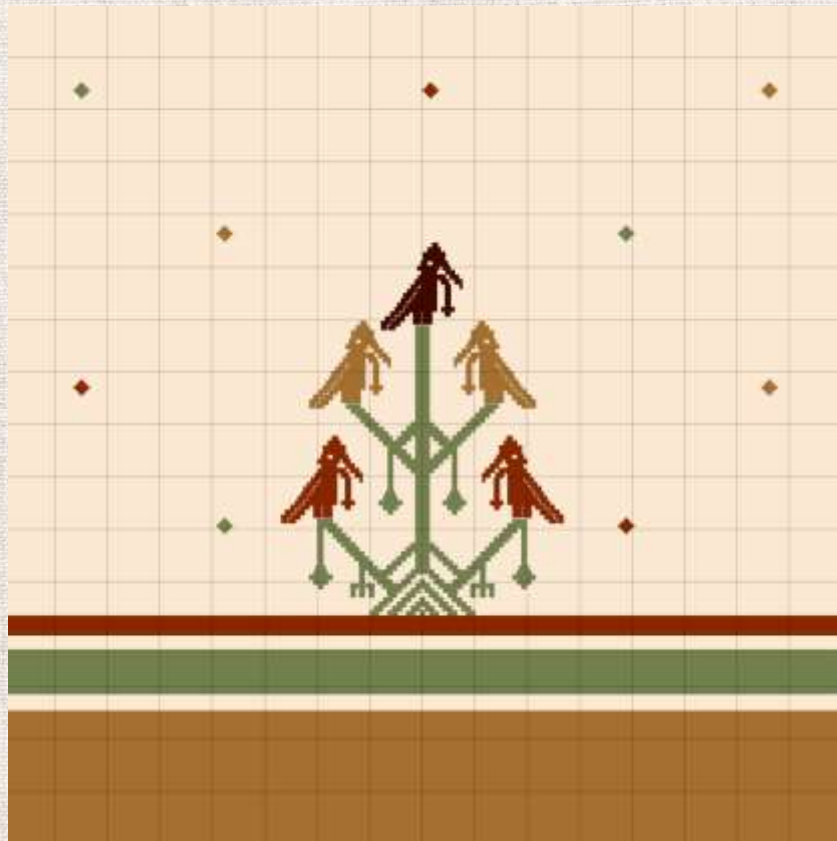
Description: The motifs on the table runner are inspired by the textiles of the Karbi people from Rongjari Village.. The design has been incorporated into a table runner.



Revival of Heritage Design - Revival Design 8

District	Ri-Bhoi	Village	Umdohkha
Sub Tribe	Raid Nongtluh	Motif name/product	Jain pan

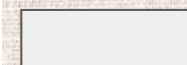
Description: The motifs on the table runner are inspired by the textiles of the Karbi people from Rongjari Village. The design has been incorporated into a cushion cover.



sondrohal



Jambili Athon



white



laha/red



tea



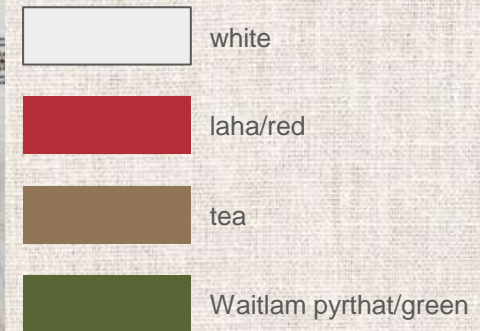
Waitlam pyrthat/green



Revival of Heritage Design - Revival Design 8

District	Ri-Bhoi	Village	Umdohkha
Sub Tribe	Raid Nongtluh	Motif name/product	Jain pan

Description: The motifs on the table runner are inspired by the textiles of the Karbi people from Rongjari Village. The design has been incorporated into a cushion cover.



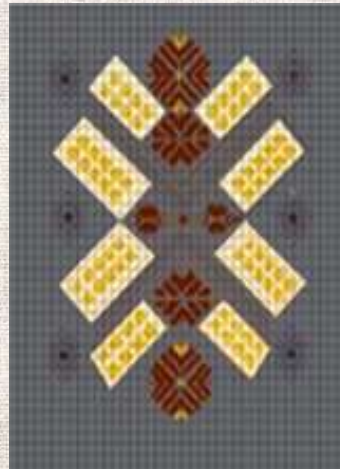
Revival of Heritage Design - Revival Design 9

District	Ri-Bhoi	Village	Umdohkha
Sub Tribe	Raid Nongtluh	Motif name/product	Jain pan

Description: The motifs on the throw are inspired by the textiles of the Karbi people from Plasha Village. The design has been incorporated into a contemporary product using different woven motifs.



80 in



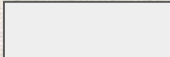



Bir kilut ahi



Chestnut



Delong archok (bridge)

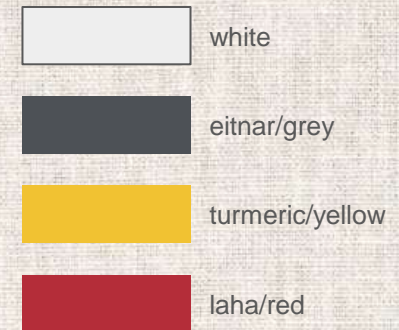
	white
	eitnar/grey
	turmeric/yellow
	laha/red



Revival of Heritage Design - Revival Design 9

District	Ri-Bhoi	Village	Umdohkha
Sub Tribe	Raid Nongtluh	Motif name/product	Jain pan

Description: The motifs on the throw are inspired by the textiles of the Karbi people from Plasha Village. The design has been incorporated into a contemporary product using different woven motifs.



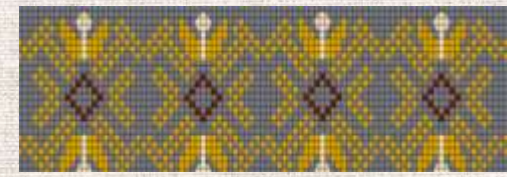
Revival of Heritage Design - Revival Design 10

District	Ri-Bhoi	Village	Umdohkha
Sub Tribe	Raid Nongtluh	Motif name/product	Jain pan

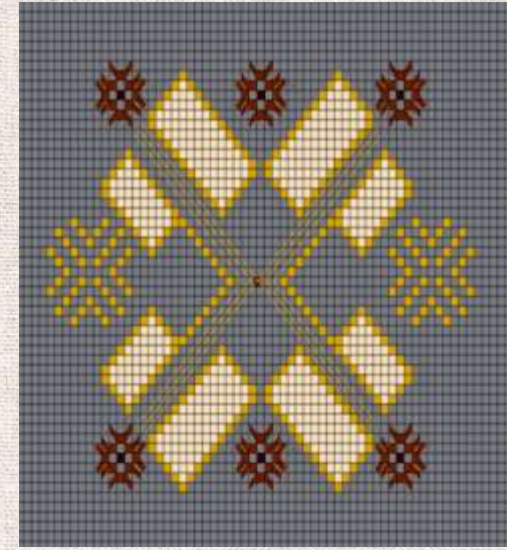
Description: The motifs on the throw are inspired by the textiles of the Karbi people from Plasha Village. The design has been incorporated into a contemporary product using different woven motifs.



20 in



Delong archok (bridge)



Bir kilut ahi

- white
- eitnar/grey
- turmeric/yellow
- laha/red

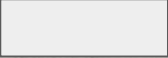





Revival of Heritage Design - Revival Design 10

District	Ri-Bhoi	Village	Umdohkha
Sub Tribe	Raid Nongtluh	Motif name/product	Jain pan

Description: The motifs on the throw are inspired by the textiles of the Karbi people from Plasha Village. The design has been incorporated into a contemporary product using different woven motifs.



-  white
-  eitnar/grey
-  turmeric/yellow
-  laha/red



Revival of Heritage Design - Revival Design 11

District	Ri-Bhoi	Village	Umdohkha
Sub Tribe	Raid Nongtluh	Motif name/product	Jain pan

Description: The motifs are inspired by the textiles of the Karbi people from Tomonpo Village. The design has been incorporated into a contemporary product that can be used as wall decor using different woven motifs.



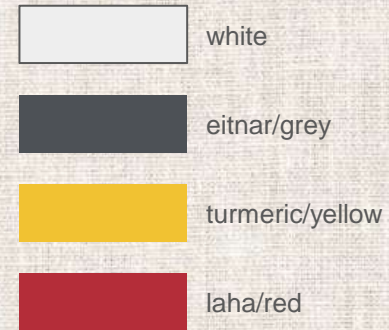
Del



Bir kilut ahi



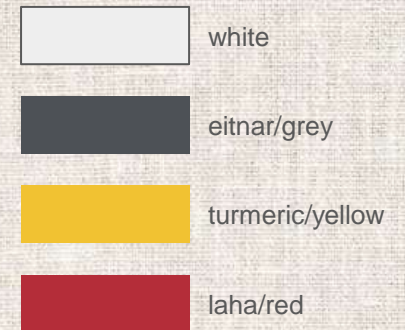
Howen-op-ahi



Revival of Heritage Design - Revival Design 11

District	Ri-Bhoi	Village	Umdohkha
Sub Tribe	Raid Nongtluh	Motif name/product	Jain pan

Description: The motifs are inspired by the textiles of the Karbi people from Tomonpo Village. The design has been incorporated into a contemporary product that can be used as wall decor using different woven motifs.



Revival of Heritage Design - Revival Design 12

District	Ri-Bhoi	Village	Umdohkha
Sub Tribe	Raid Nongtluh	Motif name/product	Jain pan

Description: The motifs are inspired by the textiles of the Karbi people from Tomonpo Village. The design has been incorporated into a contemporary product that can be used as wall decor or a cushion cover with the use of different woven motifs.

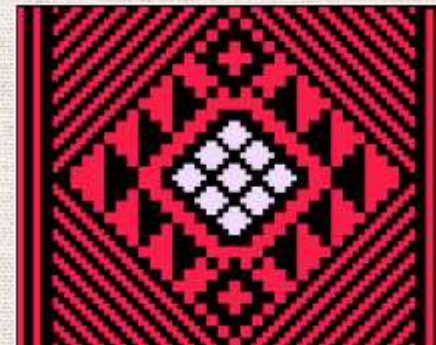


26 in

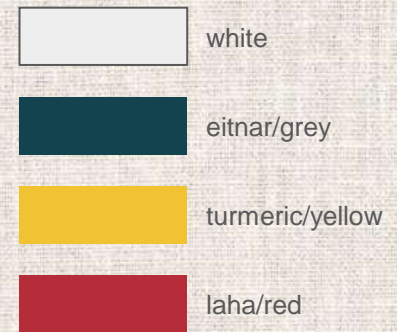
20 in



Del



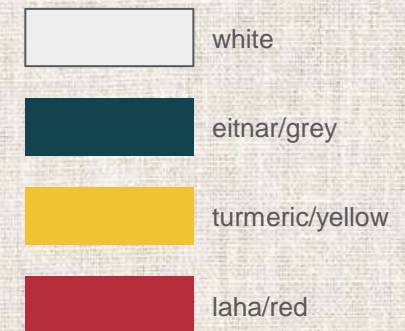
Howen-op-ahi



Revival of Heritage Design - Revival Design 12

District	Ri-Bhoi	Village	Umdohkha
Sub Tribe	Raid Nongtluh	Motif name/product	Jain pan

Description: The motifs are inspired by the textiles of the Karbi people from Tomonpo Village. The design has been incorporated into a contemporary product that can be used as wall decor or a cushion cover with the use of different woven motifs.



CONCLUSION

The revival of heritage designs is an effective way to preserve cultural traditions, motifs, design, techniques and story through textile. By incorporating and interpreting traditional motifs and techniques into contemporary and modern products, it is sure that these designs are appreciated and stay relevant in modern times. It also fosters a deeper connection between past and present generations and the deep meaning behind each art. This resurgence not only celebrates craftsmanship but also contributes to the sustainability of cultural heritage.

